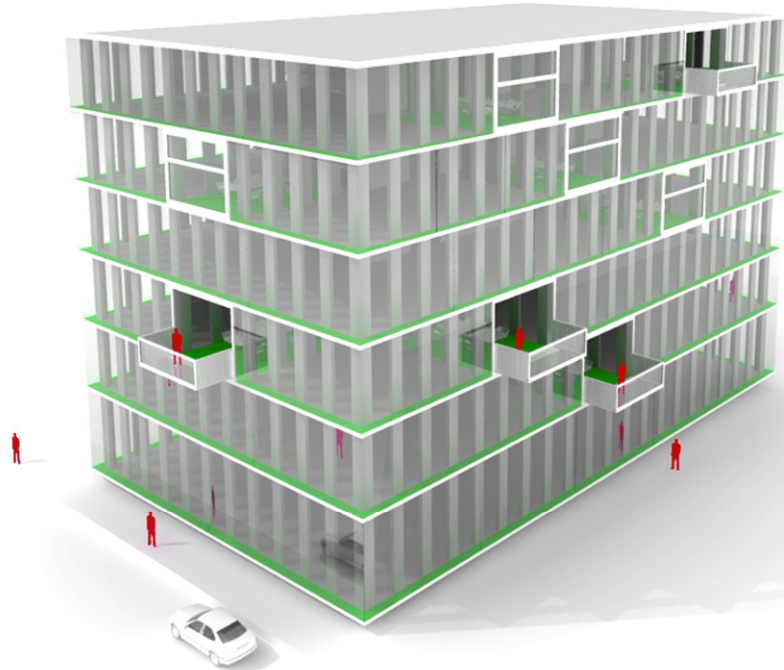


BLOOMFRAME® OFFICE

description	Office building
program	4800m ²
location	Amsterdam The Netherlands
collaboration	IPMMC Utrecht
phase	Preliminary Research
date	2007-2009
team	Barbara Dujardin, Michiel Hofman, Tinka Niemann, Nuno Urbano and Bart Wigger
press	www.bloomframe.nl/press/BloomframeOffice

The office of six layers contains 4800m² of office space. The building has a concrete centre including facilities, stairs and elevators. The façade is composed out of two layers. The outside glass façade is a transparent unisolated layer. The inner facade is constructed from prefabricated concrete elements with a width of 60cm. The space between the two façade layers is a semi outdoor space and is used as a energy saving buffer. On several strategic points the inner concrete façade moves inside the building creating a transparent space with a strong relation with the outdoor surrounding. The emphasize this relation the 'green' rooms are equipped with large Bloomframe® balconies. The façade can be opened and used as a tremendous terrace. The opening and the closing of the façade turns the relatively simple building into a dynamic innovative office building.

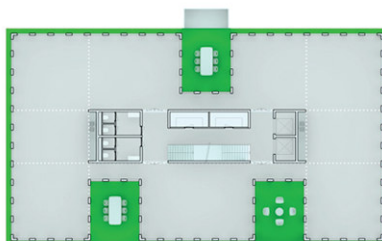
HOFMAN DUJARDIN ARCHITECTEN



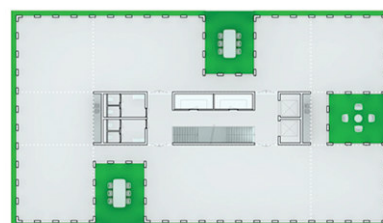
0



3



1



4

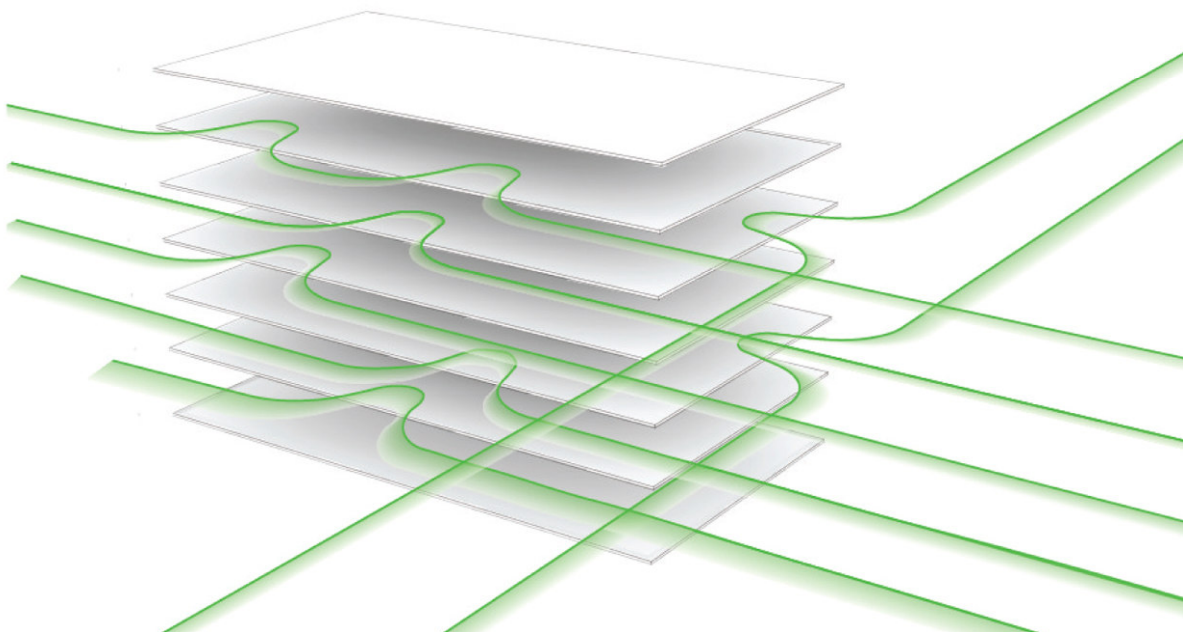


2

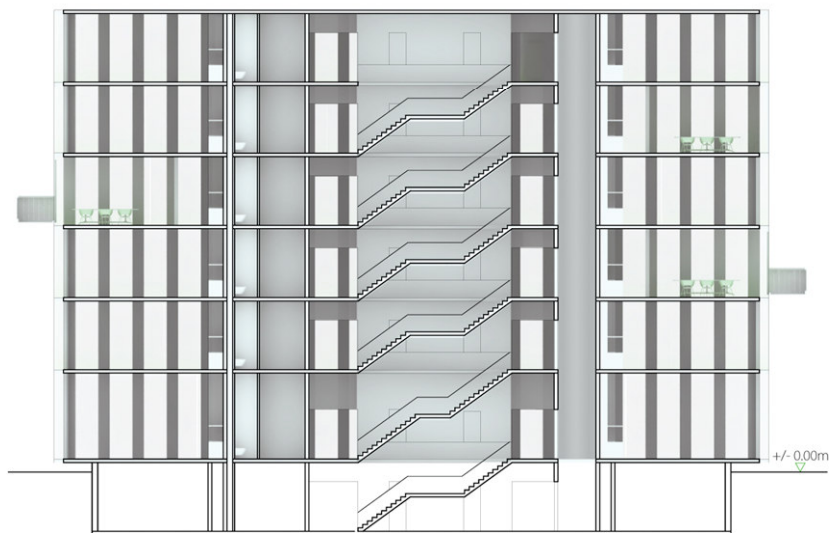
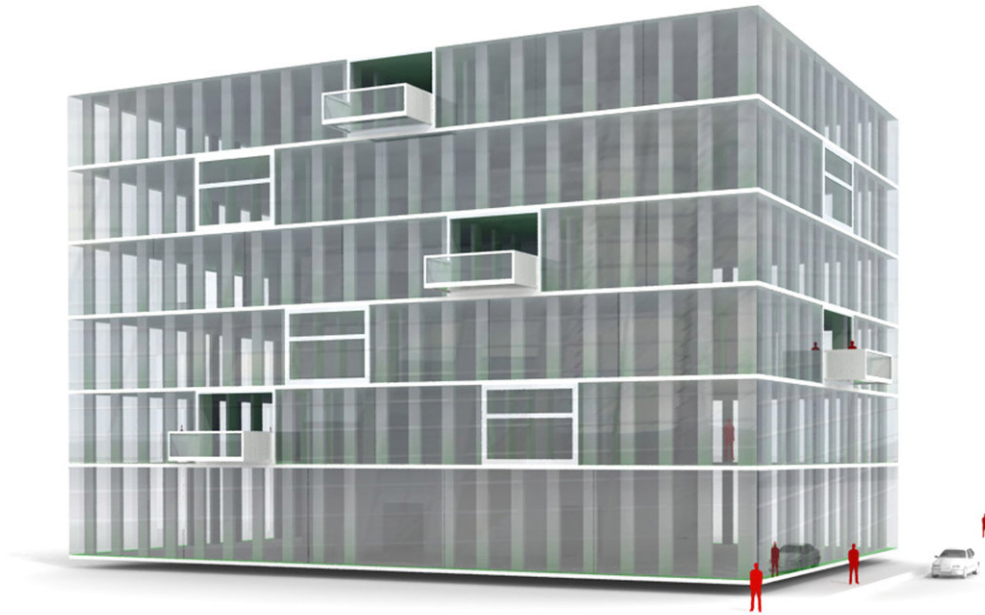


5

HOFMAN DUJARDIN ARCHITECTEN



HOFMAN DUJARDIN ARCHITECTEN



section